

The Family of C's

A **ledger line** is a short line added above or below the staff for notes that are too high or too low to be written on the staff.

- Trace the ledger lines for the **Low**, **Middle**, and **High C's** below.
- Play each C on the piano and say its correct name.
Use finger 3 for each hand.

High C is located 2 ledger lines *above* the treble clef staff.

High C - -

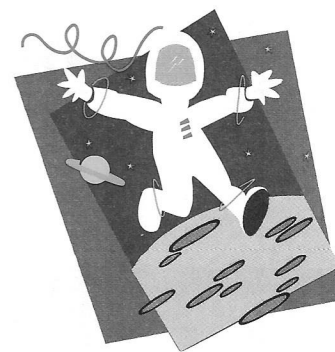
Middle C - -

Low C - -

Low C is located 2 ledger lines *below* the bass clef staff.

Technique Hint

- Use your arm weight to “drop into” each key.
- Make gentle lifts from C to C as if you were an astronaut walking on the moon.



Moon Walker

Strong and steady (♩ = 88-100)

Pedal down. Lift pedal.



Play *Moon Walker* using **D's** across the keyboard.